

icIEF/CEInfinite Analytical System Test Kit

P/N100051
Product Insert

Introduction

The icIEF/CEInfinite analytical system test kit is designed to provide users with a convenient method of checking the icIEF system repeatability. It is recommended to be used after new installation or configuration change.

Kit Contents		
Solution #	Description	Qty/Amt
1	6 pI mixture	250 µL
2	IEF solution 4% pH 3-10	25 mL

Preparation Procedure

- Add 1µL of pI mixture #1 into 200uL IEF solution #2;
- Shake the vial briefly and centrifuge about 15 seconds;
- Transfer 200µL of suitability mixture and into a sample vial, and put in position 1 of the 84 vial tray;
- Install a CEInfinite Cartridge;
- Run CEInsight software;
- Perform Startup procedure in software;
- Create and run the sample with 3 repeats and corresponding sample positions in software;

Set Focus Time

Three-stage focusing process is recommended, which will minimize spurious peaks and baseline noise:

Focus Period	Voltage (V)	Time (mins)
1 (Prefocus)	1000	1.0
2 (Focus)	2000	1.0
3 (Focus)	3000	4.0

Kit Storage

Store at 2 °C to 8 °C.

Ordering Info

This kit can be ordered by:

- Phone: 1-519-653-6888
- Email: orders@aeslifesciences.com
- Online store: <https://ceinfinite.com/registration/>

Checking your Results

A typical electropherogram of the 6 pI analytical test kit is shown in Figure 1. All pI markers shall be observed. Calibrate using the smallest pI 3.50 and the largest pI 9.33.

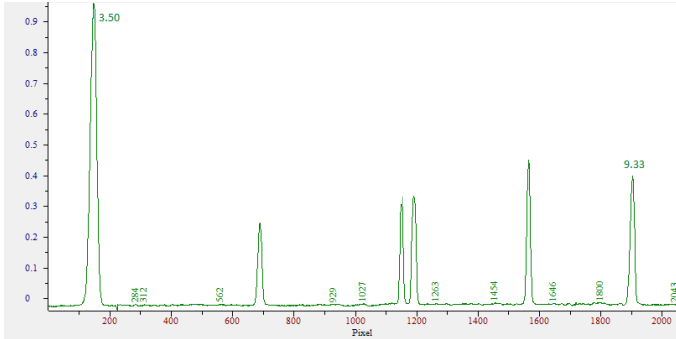


Figure 1. Typical Electropherogram for the 6 pI solution.

Parameter	Allowable Range
Overall	6 pI Marker peaks observed
pH range	2.5-3.5 to 9.5-10.5 with pI 3.50 and pI 9.33
Repeatability	± 25 pixel
Peak area (pI 3.50) RSD	≤ 5%

Table 1. Allowable result range of 3 runs.

Advanced Electrophoresis Solutions Ltd.

Unit 7&8, 380 Jamieson Parkway

Cambridge, Ontario

N3C 4N4 Canada

Phone: (519) 653-6888, ext:102

Fax: (519) 804-4266

info@aeslifesciences.com